

Truck Bay Monitor

Usage

Table on Contents

| | |
|---|---|
| Introduction | 2 |
| Modify the Truck Bay Bulletin screens. | 2 |
| Sample Truck Bay Monitor | 3 |



Truck Bay Bulletin Board Icon

Introduction

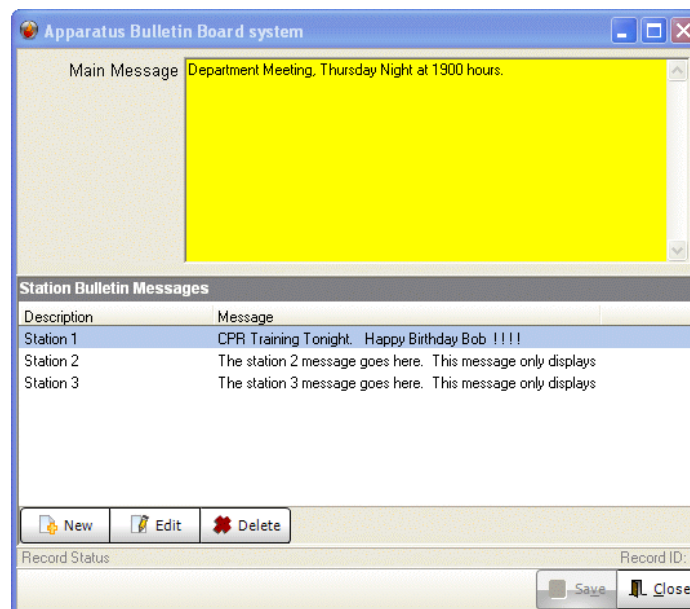
This manual describes in detail how to use the truck bay monitor system. There are two ways to access the bulletin board management system.

- Click the Auxiliary main menu.
- Access from the floating tool bar.

Modify the Truck Bay Bulletin screens.

The truck bay window consists of two parts.

1. The Main Message, represented by the yellow area.
2. The Individual Station Messages, represented by Station entry in the lower half of the window.



Follow these steps to modify the Main Message.

1. Select the Auxiliary menu set.
2. Select the **Monitor** icon found in the **Notification** tab.
3. Edit the main message by typing text in the yellow area. Press Save when done.
4. Edit the Station Bulletin Messages.

*Messages entered here are displayed on all monitors.

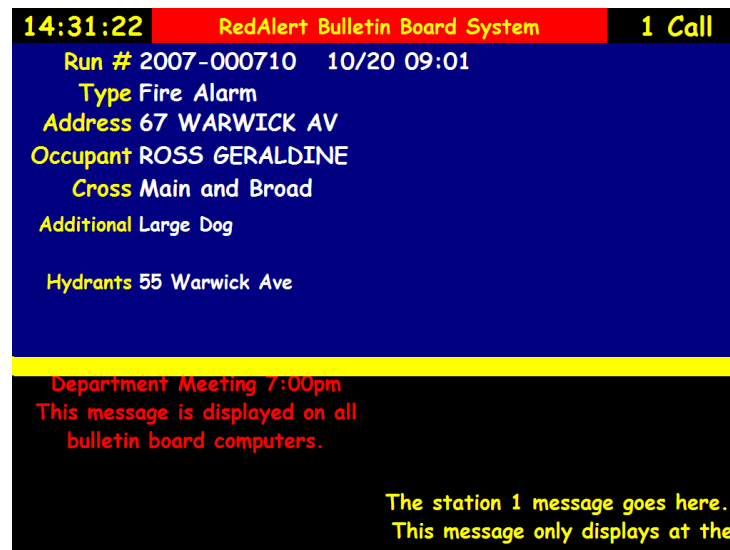
Follow these steps to modify the Main Message:

1. Double click the row of the station you wish to update the message for.
2. In the message field, type in the desired message.
3. Click Save and exit out.

*Messages for the individual stations (bulletin boards) only display on that particular monitor.

Sample Truck Bay Monitor

The main message is displayed on the left side of the truck bay. The station bulletin messages are displayed on the right side.



The red text represents the Main Message and is displayed on all monitors. The yellow text represents the specific station (monitor) message and only displays on that particular monitor.