

Hose Setup

Table on Contents

Introduction	2
Hose Management Setup	2
Tab: General	2
Tab: Description	2
Tab: Hose Type	2
Tab: Hose Couple Type	3
Tab: Hose Rating	3
Tab: Service Type	5
Tab: Inspection Type	6
Inspection Items: Creating an Inspection Checklist	6
Batch Hose Testing	7

Introduction



Hose Management Icon

This user manual describes how to setup the hose module. Access the hose setup module by pressing the down arrow on the right side of the hose icon.

Hose Management Setup

Tab: General

Enter the default hose testing type in the space provided. Use the pick list to select the from hose testing type list.

Field Name	Description	Requirement	Comments	Example
Hose Testing Type	Type of test being performed	This is a required field.	Select type from drop down list. Types created under the Hose Testing Type Tab	300 PSI / 5 Min.

Tab: Description

Enter data into the description look in this tab.

Field Name	Description	Requirement	Comments	Example
Description	The description of the hose.	This is a required field.	Enter a description in the space provided.	Hose

Tab: Hose Type

Enter the types of hose used by the department.

Field Name	Description	Requirement	Comments	Example
Code	Hose type code	This is a required field.	Enter the code for hose type.	FOR, LDH
Description	Short description of hose type.	This is a required field.	Enter a short description of the hose type	Forestry, Large Diameter

Tab: Hose Couple Type

Select this tab to enter the hose couple types.

Field Name	Description	Requirement	Comments	Example
Couple	Coupling code	This is a required field.	Enter the code for coupling type.	ST
Description	Short description of coupling	This is a required field.	Enter a short description of the coupling type	Storz

Tab: Hose Rating

Select this tab to enter the hose ratings.

Field Name	Description	Requirement	Comments	Example
Code	Rating code	This is a required field.	Enter the code for the Rating type.	300
Description	Short description of the rating.	This is a required field.	Enter a short description of the rating type.	300 lbs.

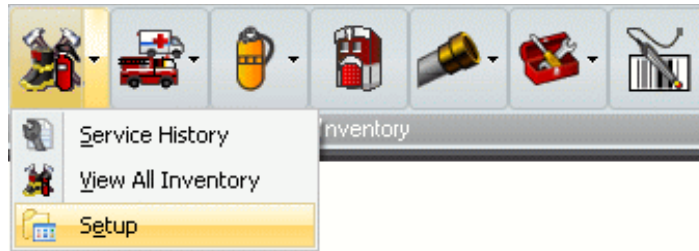
Tab: Hose Testing Type

Select this tab to enter the hose testing types.

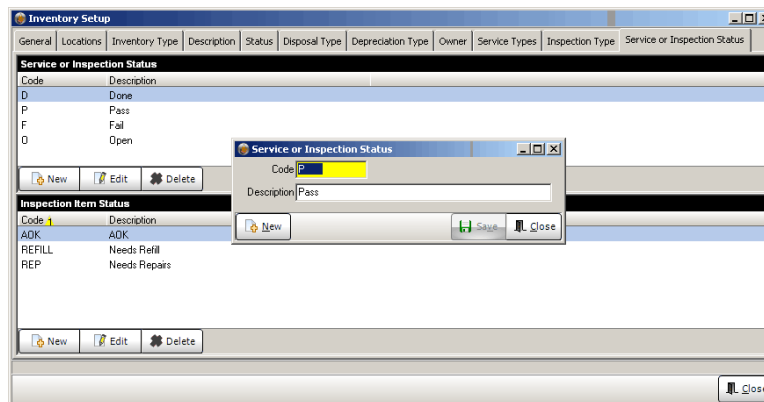
Field Name	Description	Requirement	Comments	Example
Code	Test Type Code	This is a required field.	Enter the code for in the space provided.	250PSI
Description	Short Description of the Hose Test Type	This is a required field.	Enter a short description of the testing type.	250 PSI / 5 minutes

Hose Testing Result

The Hose Testing Result field is used in the hose testing history. This code list is entered in the inventory setup. This is done by selecting the drop down choice in the inventory icon.



Select the Service or Inspection Status tab. This will bring up the following screen.



Field Name	Description	Requirement	Comments	Example
Code	Testing Status Code	This is a required field.	Enter the code in the space provided.	P
Description	Short Description of the Hose Test result	This is a required field.	Enter a short description in the space provided.	Pass

Tab: Service Type

Select this tab to enter the hose service type.

Field Name	Description	Requirement	Comments	Example
Code	Service type code	This is a required field.	Enter the code for the service type.	RG
Description	Short description of service type.	This is a required field.	Enter a short description of the service type	Replace Gasket

Tab: Inspection Type

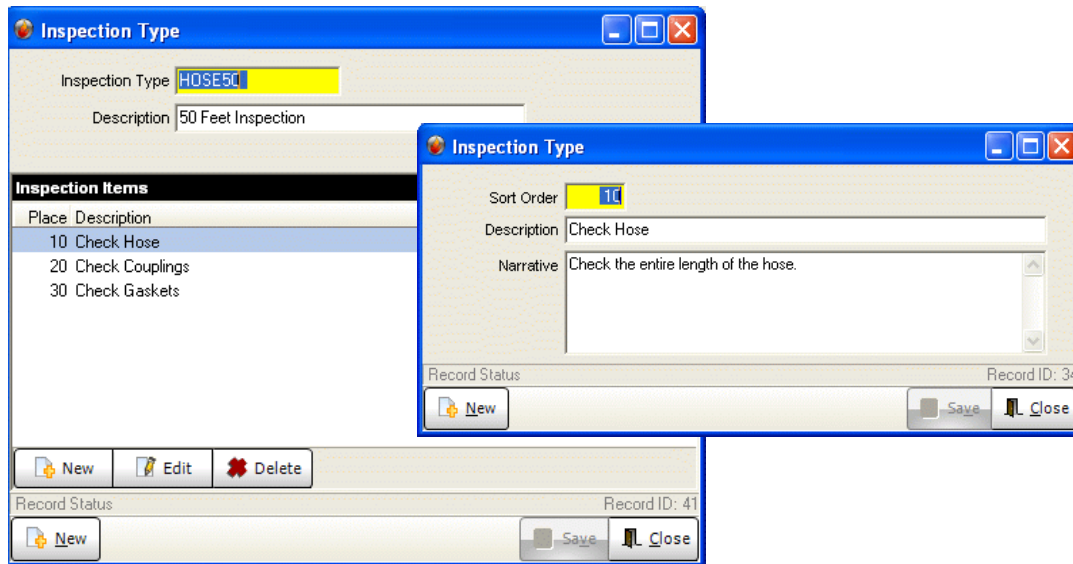
Select this tab to enter the hose service type.

Field Name	Description	Requirement	Comments	Example
Code	Inspection type code	This is a required field.	Enter the code for the inspection type.	Hose50
Description	Short description of inspection type.	This is a required field.	Enter a short description of the inspection type	50 Feet Inspection

Inspection Items: Creating an Inspection Checklist

Create new check list items by clicking the **New** button in the Inspection Items portion of the Inspection Type window. Complete the fields as outlined below. Be sure to click the **Save** button to save your entries.

Field Name	Description	Requirement	Comments	Example
Sort Order	Sort order for the item on the checklist.	This is a required field.	Enter the sort order for this item on the list	1, 2, 10.
Description	Short description of the item.	This is a required field.	Enter a short description of the checklist item.	Check Hose
Narrative	Enter narrative for inspection item.	This is an optional field.	Enter a narrative further explaining the short description.	Check entire length of hose for cuts, abrasions or other defects.



Batch Hose Testing

Click the drop down arrow to the right of the hose test icon and select Batch Hose Testing.

Hose #	Type	Location	Last Done	Type	Result
H2001	Double Jacket	Apparatus->E1->Hose Bed	06/21/2012	300 PSI / 5 minutes	Pass
H2002	Double Jacket	Apparatus->E1->Hose Bed	04/28/2011	300 PSI / 5 minutes	Done
H2003	Double Jacket	Apparatus->E1->Hose Bed	04/28/2011	300 PSI / 5 minutes	Done
H2004	Double Jacket	Apparatus->E2->Hose Bed	04/28/2011	300 PSI / 5 minutes	Done
H2005	Double Jacket	Apparatus->E1->Hose Bed	04/27/2010	300 PSI / 5 minutes	Pass
H2006	Double Jacket	Apparatus->E1->Hose Bed	04/28/2011	300 PSI / 5 minutes	Done
H2007	Double Jacket	Apparatus->E1	04/24/2008	250 PSI / 5 minutes	Pass
H2008	Double Jacket	Fire Stations->Station 1->Hose Rack	05/05/2009	150 PSI / 5 Minutes	Pass
H2009	Double Jacket	Fire Stations->Station 1->Hose Rack	03/17/2008	300 PSI / 5 minutes	Pass

Date	Duration	Pressure	Done By	Pass or Fail	Comments
06/21/2012	5	300	Amedick	Pass	Vendor Test
11/30/2011	5	300	Abarca	Pass	
04/27/2010	5	300		Pass	
05/08/2009	5	300		Pass	Done at the station
10/13/2007	5	300	Smith	Pass	

Complete the following steps to enter hose test records.

Step 1. Enter hose test defaults in the General Information box.

- A. Select the Hose Test Type from the drop down menu.
- B. Enter the date of the hose test.
- C. Select the person in charge of the hose test.
- D. Enter the Vendor, if applicable.

Step 2. Test Data

- A. Enter the Duration of the test in minutes.
- B. Enter the pressure used to test this batch of hose.
- C. Select Pass or Fail from the drop down.

Step 3. Highlight each hose that has met the Test Data requirements. And press the **Enter Test Data for Select Hose** button. Keep doing this for each hose that has been tested.

As you enter each test record, notice how the Hose Test History window is updated.