

SCBA

Setup

Table of Contents

Introduction	2
SCBA Management Setup	2
Tab: General	2
Tab: Description	3
Tab: SCBA Type	3
Tab: Inspection Types	4
SCBA Inspection Items	5
Tab: Service Type	6

Introduction



SCBA Management Icon

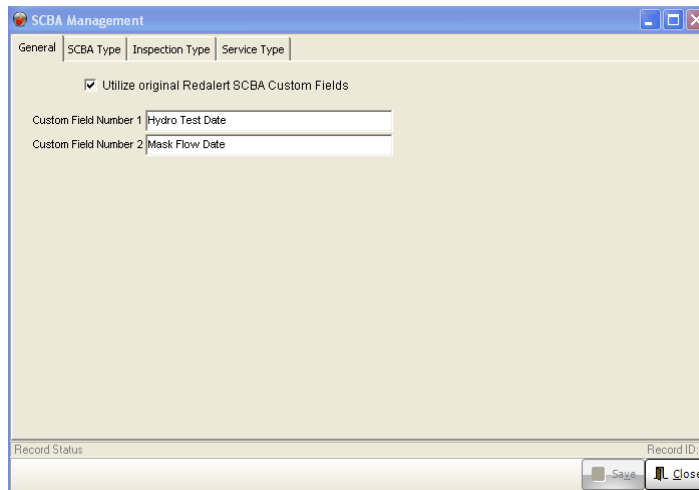
This user manual describes how to setup the SCBA module. Access the SCBA setup module by pressing the down arrow on the right side of the SCBA icon.

SCBA Management Setup

Tab: General

The following fields are managed in the General Setup.

Field Name	Description	Requirement	Comments	Example
Utilize Original	Utilize Original RedAlert SCBA Fields.	n/a	This field is used to turn on the original panel used in the RedAlert program.	Y or N
Custom Field 1	Custom Field 1	n/a	First label on SCBA entry.	Hydro Test Date
Custom Field 1	Custom Field 1	n/a	Second label on SCBA entry.	Mask Flow Date



Tab: Description

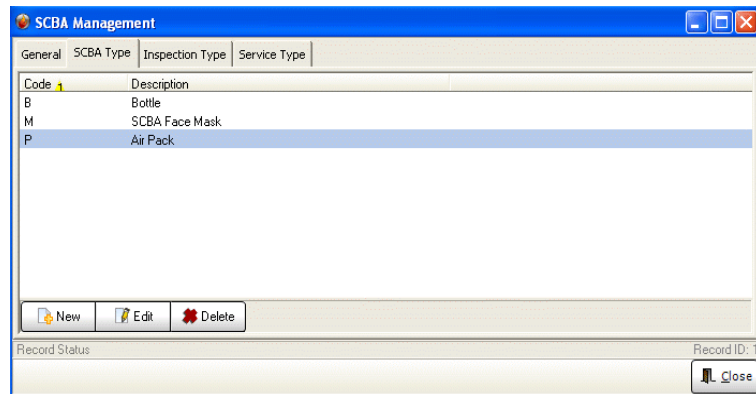
Enter data into the description look in this tab.

Field Name	Description	Requirement	Comments	Example
Description	The description of the item.	This is a required field.	Enter a description in the space provided.	Air Bottle

Tab: SCBA Type

Select this tab to enter the SCBA types.

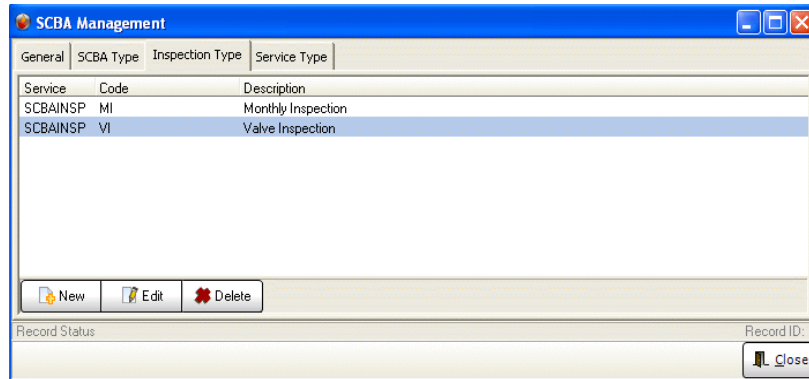
Field Name	Description	Requirement	Comments	Example
Type	Type field	Required.	Enter a unique code.	B
Description	Description field	Required.	Enter the description in the space provided.	Bottle



Tab: Inspection Types

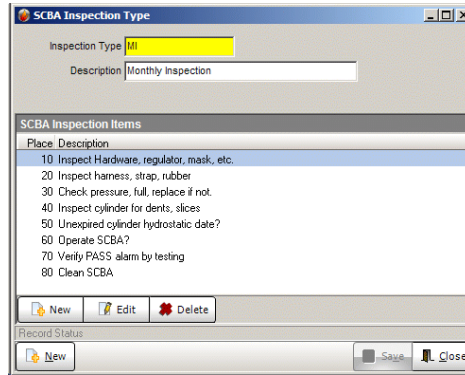
Select this tab to enter the SCBA Inspection Types

Field Name	Description	Requirement	Comments	Example
Inspection Type	Code	Required.	Enter a unique code.	MI
Description	Description	Required.	Enter the description in the space provided.	Monthly Inspection



SCBA Inspection Items

Each Inspection Type can have a list of items associated with the inspection. For example, the Monthly Inspection may include multiple steps or items to inspect as shown in the figure below.



To create Inspection Items double click on the Inspection Type. In the Inspection Type window, click the New button. The table below lists sample entries for the Inspection Type fields.

Field Name	Description	Requirement	Comments	Example
Sort Order	Order of Placement on Form.	Required.	This determines the placement order.	20
Description	N/A	Required.	Description of inspection entry.	Inspect harness, strap, rubber
Narrative	N/A	N/A	Enter a brief narrative of the operation or procedure.	Inspect straps for tears and abrasions

Tab: Service Type

Select this tab to enter the SCBA service type.

Field Name	Description	Requirement	Comments	Example
Secondary Type	Type field	Required.	Enter a unique code.	CL
Description	Description field	Required.	Enter the description in the space provided.	Clean

